

ONTARIO'S LIFE OR LIMB POLICY

Implementation Update • 2ND Edition • August 2014

Dear Colleagues,

Welcome to the 2nd edition of the Life or Limb Policy Implementation Update for 2014. In the fall of 2013, CCSO along with CritiCall Ontario embarked on a series of Local Health Integration Network (LHIN) Town Hall meetings to launch the Provincial Life or Limb Policy. These meetings garnered excellent participation, with over 500 registrants across Ontario.



September 2013 - Dr. Bernard Lawless, Provincial Lead Critical Care and Trauma (CCSO), presents at the Waterloo Wellington and Hamilton Niagara Haldimand Brant LHIN meeting.

This fall CCSO will once again be hosting Town Hall meetings in Ontario's fourteen LHINs as a means to engage across all levels of providers and system partners. Particular focus will be on repatriation and implementation of the policy from a LHIN perspective. CCSO is looking forward to collaborating with each LHIN as we explore the many successes and challenges that have emerged since the policy was launched in January 2014. Please find a list of scheduled LHIN meetings below (see next page).

We invite you to attend this year's town hall. The agenda items for this meeting will include:

Morning Session 8:00 AM-12:00 PM

- Repatriation
- Life or Limb Policy Implementation
- Strategic Planning for Critical Care
- Surge Capacity Management Planning

Target audience: LHIN leadership/staff, Senior Hospital Administrators/Senior hospital clinical staff, patient transport partners

Afternoon Session 1:00 PM-3:30 PM

- Why data quality is important
- Understanding how CCSO uses CCIS data to inform strategic initiatives and advise the Ministry of Health and Long-Term Care
- Managing data quality to enable system improvement and integration

Target audience: Critical Care Unit Directors and Nurse Managers, hospital data entry personnel, Hospital Research Coordinators, Decision Support staff and LHIN leadership/directors/staff involved in performance/accountability management.

2014 LHIN Town Hall Meetings – Calendar Of Events

SEPTEMBER

September 4: Hamilton Niagara Haldimand Brant
St. Joseph's Hospital, Hamilton, ON
<https://hnhblhinmeeting.eventbrite.ca>

September 9: South East LHIN
Donald Gordon Conference Centre, Kingston, ON
<http://southeastlhinmeeting.eventbrite.ca>

September 10: Waterloo Wellington LHIN
Holiday Inn Kitchener Waterloo, Kitchener, ON
<https://wwlhinmeeting.eventbrite.ca>

September 23: North West LHIN
Thunder Bay Health Sciences Centre, Thunder Bay, ON
<http://northwestlhinmeeting.eventbrite.ca>

September 25: North East LHIN
Health Sciences North, Sudbury, ON
<http://northeastlhinmeeting.eventbrite.ca>

September 30: Erie St. Clair LHIN
Windsor Regional Hospital, Ouellette Site, Windsor, ON
<https://eriestclairlhinmeeting.eventbrite.ca>

OCTOBER

October 1: South West LHIN
London Health Sciences University Campus, London, ON
<http://southwestlhinmeeting.eventbrite.ca>

October 2: Mississauga Halton LHIN
Mississauga Grand, Mississauga, ON
<https://mississaugahaltonlhinmeeting.eventbrite.ca>

October 14: Central LHIN
Mackenzie Health, Richmond Hill, ON
<http://centrallhintownhallmeeting.eventbrite.ca>

October 15: Central West LHIN
Speranza Hall, Brampton, ON
<https://centralwestlhinmeeting.eventbrite.ca>

October 16: North Simcoe Muskoka LHIN
Royal Victoria Regional Hospital, Barrie, ON
<http://northsimcoemuskokalhinmeeting.eventbrite.ca>

October 20: Central East LHIN
Lakeridge Health, Oshawa, ON
<https://centraleastlhinmeeting.eventbrite.ca>

October 21: Toronto Central LHIN
The Double Tree Downtown, Toronto, ON
<https://torontolhinmeeting.eventbrite.ca>

October 22: Champlain LHIN
The Ottawa Hospital, Civic Campus, Ottawa, ON
<https://champlainlhinmeeting.eventbrite.ca>

Repatriation – A Provincial Perspective

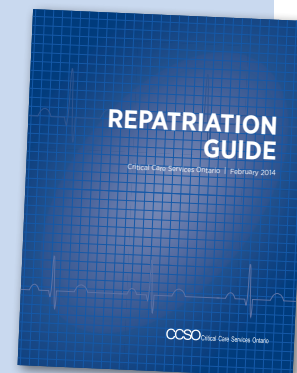
The Life or Limb Policy addresses expectations regarding the repatriation of patients to the referring or home hospital. The Repatriation Guide, developed by CCSO in collaboration with the Provincial Patient Repatriation Advisory Committee, is an integral part of the Provincial Life or Limb Policy and provides guidance for the timely repatriation of patients between acute care hospitals across Ontario.

The Guide identifies processes to facilitate the effective and efficient repatriation of patients. It serves as a complement to existing protocols and processes that may already exist within your organization. Alternately, for organizations that do not have a structured process in place for repatriating patients, we hope that this guide will serve as a foundation for establishing new procedures and encourage partnerships within your area and surrounding LHINs.

CCSO distributed a copy of the Repatriation Guide to all Ontario hospitals. If you wish to receive an electronic copy of the Repatriation Guide or if you wish to have a copy in French, please send your request to: ccsadmin@uhn.ca.

IN FOCUS: Guiding Principles of Repatriation

- The primary priorities for repatriation of patients are timely access to an appropriate level of care, patient safety and quality of care.
- All repatriations will follow direct physician to physician conversation and can occur seven days per week.
- Patients will be repatriated within 48 hours once deemed medically stable and suitable for transfer.
- Patients will be repatriated to the “home” hospital as long as the hospital can provide the clinical services required. If the “home” hospital is unable to provide care, the patient will be referred to a hospital “closest to home” for the required services.
- Each LHIN should develop an inventory of hospitals and services.
- Hospitals will utilize CriteCall Ontario's Provincial Hospital Resource System Repatriation Tool.



An Update From CritiCall Ontario



CritiCall Ontario's PHRS Repatriation Tool

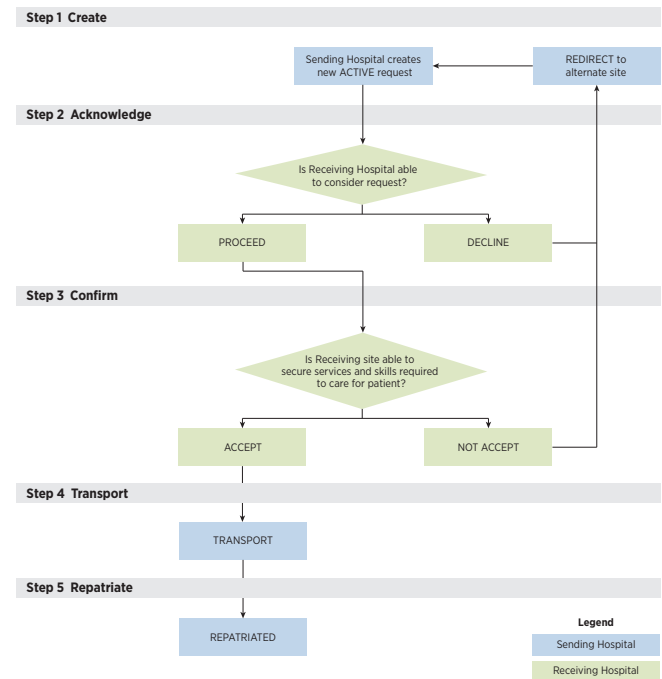
In May, CritiCall Ontario enhanced the PHRS Repatriation Tool and hosted numerous training webinars from April to June.

Features of the PHRS Repatriation Tool:

- Available to all Ontario acute care hospitals
- Common system to electronically submit, receive and document repatriation requests
- Supports the monitoring of the Life or Limb Policy
- Captures data including volumes, repatriation flow between hospitals, reasons for actions
- Enables system and LHIN level reporting and performance monitoring

The following diagram (Figure 1) outlines the roles and responsibilities of the sending and receiving hospitals when repatriating a patient. Along with the PHRS Repatriation Tool, this diagram is meant to facilitate the repatriation process.

Figure 1: Repatriation Tool Algorithm



Implementation Update: Weekly Reports on Life and Limb Cases in Ontario

Since January 2014 hospital CEOs, Chiefs of Staff, Critical Care and Emergency Department LHIN Leads have been receiving Weekly Life or Limb Hospital and System Response Reports as well as Monthly Summary Data Reports. Both reports have served as an opportunity for LHINs to identify system gaps to improve access to acute care services. Over the past 6 months, CCSO in collaboration with CritiCall Ontario, LHIN and hospital leaders, have worked to streamline the reporting and monitoring process. Moving forward, weekly reports will no longer be generated, and the focus will remain on monthly reporting and monitoring.

For all other inquiries regarding the Life or Limb monthly Summary Reports, please contact:
Decision Support Manager Ryan.Rebello@criticall.org

CCSO values our diverse stakeholder engagement, which in turn helps to shape, and strengthen the Life or Limb Policy initiative. Together we work towards building a better and improved system of critical care services for the Province of Ontario. We hope you will make every effort to join us this September and October for your local LHIN Town Hall meeting. We believe that the discussions around repatriation, Life or Limb Implementation and Strategic Planning for Critical Care will be of great value as we continue with the implementation of this policy.

Sincerely,

Bernard Lawless, MD, MHSc, CHE, FRCSC
Provincial Lead, Critical Care and Trauma
CCSO

Linda Kostrzewa, RN, BAS Hons., MHSc
Director
CCSO